

## Creation, Evolution, and Scientific Facts #5

**Don Johnson**, Ph.D.s: Chemistry/Computer & Information Sciences

#1 Science fundamentals and Biblical basis for series

#2 The origin of mass and energy: science, pseudoscience, and Biblical perspectives

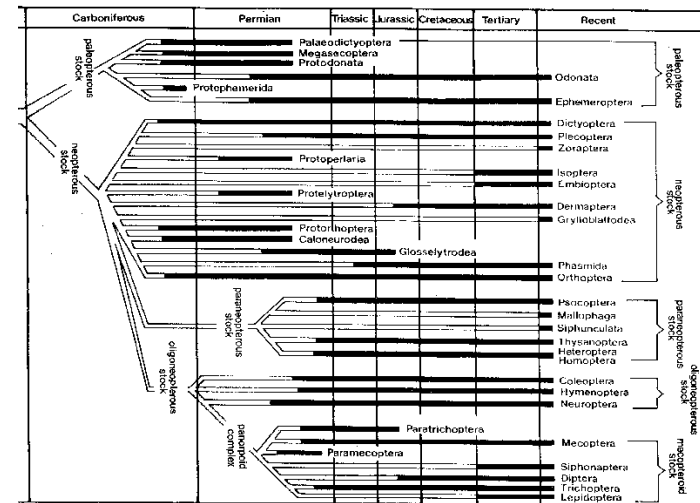
#3 Life and its origin: what does known science demonstrate

#4 Evolution, species, and "kinds": what changes are known to science

#5 **The flood, catastrophism, fossils, and time (e.g.-- ages of the earth and early men)**

#6 Scientific reliability of the Bible in a number of scientific fields, including statistics of prophecies

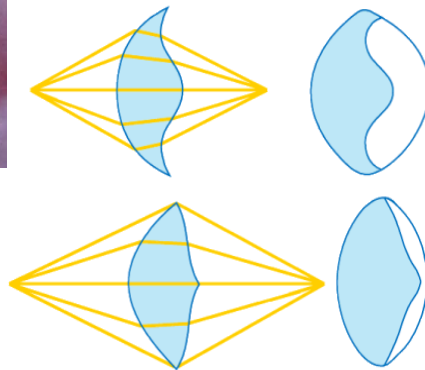
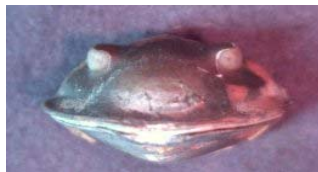
Actual (black) vs. Presumed Connections ('77 Ency. Brit.)



## Trilobite Lens Design

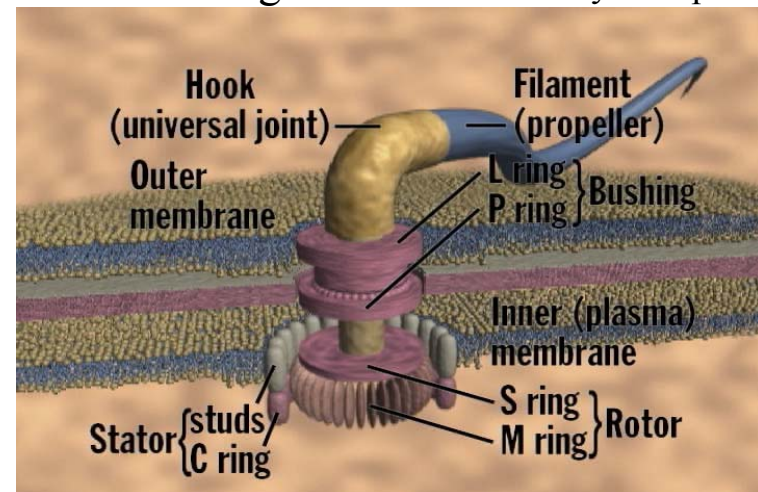
Found in lowest (Cambrian) Fossil-bearing Stratum

images ©1999, 2000 by S. M. Gon III, from Clarkson and Levi-Setti 1975



- Designer lens in Trilobite
- (For minimum aberration)
- Descartes' in *Crozonaspis*
- Huygens' in *Dalmanitina*

## Bacterial Flagellum: Irreducibly Complex



## Pre-flood Environment

Possible pre-flood water canopy (Mabbul vs Teom):

Gen. 1:6-7, 2:5-6, 6:17, 7:6-7&11-12, 8:2, 9:14-15, Ps 18:7-15, Mat. 24:37-39, Heb. 11:7, 2 Pet. 2:5&3:5-6

Evidence of canopy (6-mile vapor/30-foot ice-water):

- Long ages prior to flood exponentially (95%) decline
- World-wide greenhouse (tropical vegetation/animals)
- Flying pteranodons (50' wingspan) requiring 2-3 atm
- Gigantism (40-ton dinosaurs, 25" wingspan insects) caused by increased oxygen pressure and decreased harmful radiation compared to today.
- Canopy has no natural explanation



## The Cataclysm (Gen. 7:11-8:14)

- Severe volcanic and earthquake activity
- Land mass separated into continents (plate tectonics)
- Mountains formed, great crevices (up to 6-miles deep) opened to receive the waters
- Land masses collapsed as the high-pressure underground water (Gen. 2:6) broke through (eruptions) the surface
- Unencumbered tidal action adds to the devastation
- Rapidly receding water left its mark on the newly deposited layers of strata (e.g. the Grand Canyon). Huge canyons extend over 300 miles into the ocean

## Earth Surface Changes

Pangea (Gen 1:9)

Divided (Gen 19:25)



TRIASSIC  
200 million years ago



PRESENT DAY

**Fossilization** (Requires rapid water-borne mud covering)

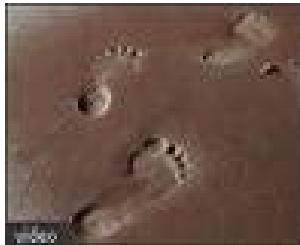
- The lowest layers: organisms with high density, small size, low mobility, and/or low-level habitation
- Swimming water-inhabitants would be next
- Amphibians and other near-water occupants next
- Reptiles, mammals, and birds at higher levels, depending on their mobility and habitat
- Few "higher" land animals/man found below top levels
- Geologic Column (< 0.4% have all 10 strata)
- Rapid burial: Huge dinosaur graveyards, fossil-fuels indicate massive undecomposed living matter burial, polystrate trees through up to 12 sediment layers

## Feasibility of the Ark & “Old” Humans

- God caused migration to the ark (Gen. 7:8-9)
- About 1.7% couldn't survive a marine environment ("kinds" brings this down to approximately ¼%)
- Young animals may require <300 bigger than a sheep
- Ark had a 3,000,000 ft<sup>3</sup> capacity (>500 cattle-cars)
- Many animals could have hibernated
- Virtually all peoples have a catastrophic flood in their prehistoric legends and myths
- Human bones and artifacts found inside coal
- Human/dinosaur footprints found in the same strata & drawings indicate contemporaneous existence (Job 40:15-24)

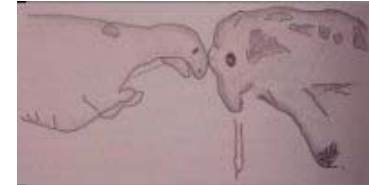
## 3.7 million-year old Laetoli Footprints

- “They looked so human-like, some scientists had a hard time believing that they were made by Australopithecus afarensis (Lucy's species), the only human ancestor known to have lived at the time.” PBS
- Footprints are "indistinguishable from those of modern humans" Anderson, New Scientist 98:373, 1983



## Ancient Dragon/Dinosaur Artifacts

Wupatki NP Petroglyph Dinosaur/Mammoth Sauropod  
Behemoth-brachiosaurus Job 40:15-24; Leviathan-kronosaurus  
Job 41, Ps 104:25-26; tanniyn-dragon-dinosaur (28 times)



## Mount St. Helens Insights (5/18/80)

- Earthquake/eruption with 20,000 Hiroshima-sized bombs power toppled 150 mi<sup>2</sup> of forest in 6 minutes, moving >1 mi<sup>3</sup> of rock
- Resulting hydraulic, mud, and lava flows deposited up to 600 feet of strata in the event, with some eroded causing gullies 140 feet deep and >200 feet wide
- Millions of sinking logs cause massive organic build-up on the bottom of Spirit Lake, being surrounded by sediment (upright trees may form a "petrified forest")
- Peat is being formed from bark rubbed from trees
- “Million-year” changes occurred in <5 years

## Mount Saint Helen's Area



### Traditional Literal 6-Day Explanation of Starlight

- “Let there be lights in the expanse of the sky... let them serve as signs to mark seasons and days and years.” Gen 1:14 (Day 4)

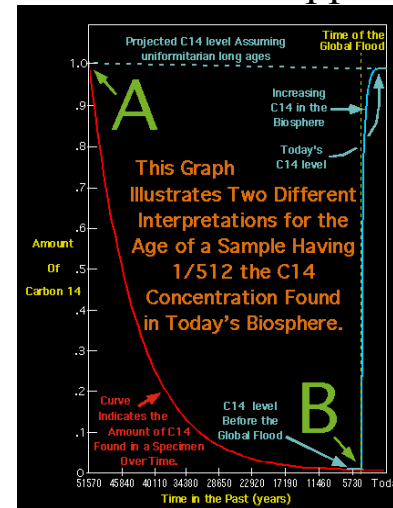
- Universe created “mature,” like it is today

God created stars and their light (some believe the speed of light decreased exponentially to today's level)

בְּרֵאשִׁית בָּרָא אֱלֹהִים אֶת הַשָּׁמַיִם וְאֶת הָאָרֶץ  
 the Earth and the heavens God (Elohim) had created in-beginning

- Most don't believe in literal 6-day creation (day-age)
- Hebrew has unspecified time after verse 1
- “With the Lord a day is like a thousand years, and a thousand years are like a day.” 2 Pet 3:8 (Ps 90:4)

## Pre-Flood Apparent vs Actual Age



- Radiation +  $^{14}\text{N} \rightarrow ^{14}\text{C}$  (Canopy cut radiation)
- $^{14}\text{C} \rightarrow ^{12}\text{C} + \beta^-$ ,  $t_{1/2} = 5730\text{y}$
- Date as old as 60,000y, assuming constant  $^{14}\text{C}/^{12}\text{C}$
- Few examples > 6000y
- “Old” life buried by flood
- Sequoia and bristlecone pine trees are just over 4000 years maximum

### Relativity Literal 6-Day Explanation of “old” Starlight

Time slows with increasing velocity and gravity (proven)

IF “Let there be light” (Gen 1:3) was the “big bang”:

- High velocity & high gravity would slow time
- Several have used Einstein's GTR to calculate:
- 1<sup>st</sup> 24 earth hours = 8 billion yrs to external observer
  - Next 4 billion years = day 2 (of 24 earth hours)
  - Day 6 would appear externally as 250 million years
  - First 6 earth days = 15.75 billion external years

Gerald Schroeder (Science of God) calculates  $10^{12}$  expansion of space-time produces 16.43 billion years for the first 6 earth-days of 24 hours

## Some Cautions on Dogma

- Use caution when basing beliefs on partial understanding
- Copernicus was “heretic” for sun-centered solar sys: “O sun, stand still” Josh 10:12 (not “Earth stop rotating”)
- Flat-Earthers use “in the four corners of the earth” Rev 20:8
- Don't make “my belief” the criterion for salvation  
Some: if you don't believe Genesis, throw out Bible, or: a Christian can't believe in evolution
- Realize that beliefs based on faith may not be backed by science, but realize that “science” may be false
- Critical beliefs are supported by multiple verses  
6-day creation in Ex 20:11 & 31:17 (implied 10 times)

## Spiral Galaxy and Radio Halo

Arms wind-up with age Visible rings mean instant formation



## Young Earth/Universe Scientific Evidence

- High oil and gas pressure (<10ky)
- Magnetic field decay (<10ky) (many reversals during flood)
- Helium (radiodecay product) in rocks (<8ky)
- Comet tails visible (<<1by)
- Receding (4 cm/yr) moon (<1by)
- Earth rotation slowing by 2 ms/century
- Unfossilized dinosaur bone with DNA & blood cells
- Radiohalos indicate rapid formation of granite
- Spiral galaxies are distinguishable

## Conclusions

- **There is considerable evidence for Noah's flood**
- **The Earth changed dramatically during/after the flood**
- **Dating pre-flood life is unreliable**
- **Multiple plausible 6-day explanations of “old” universe**
- **There is scientific evident of young Earth & Universe**
- **Our knowledge on any subject is limited – “Now we see but a poor reflection as in a mirror.” (1 Cor 13:12)**
- **Science can't prove the Bible is true, but can support it**
- **The world is blind to many truths (Rom. 1:18-32, 1 Cor. 1:18-2:16) – “They exchanged the truth of God for a lie.”**